



P&E TECHNOLOGY



BS4825 Standard Sanitary  
Stainless Steel Tubing, Fittings

**BS4825**

[www.pestainless.com](http://www.pestainless.com)

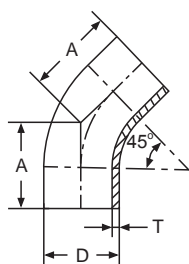


P&E TECHNOLOGY

Provide our customers with the best solution accurately and efficiently.

# BS Fittings

AL2WS Bend 45°

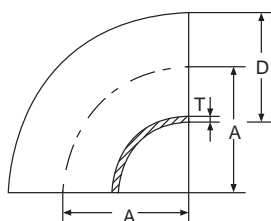


Basic Ordering Number: 3026

NO.	Size	D	A	T
3026 0100	1.0"	25.4	22.8	1.6
3026 0150	1.5"	38.1	31.6	1.6
3026 0200	2.0"	50.8	46.3	1.6
3026 0250	2.5"	63.5	60.9	1.6
3026 0300	3.0"	76.2	70.3	1.6
3026 0400	4.0"	101.6	84.9	2.0

\*\*T304 and T316L are available.

A2WCL Bend 90°, No Tangent

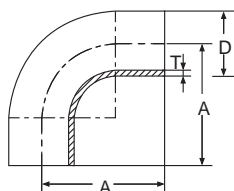


Basic Ordering Number: 3027

NO.	Size	D	A	T
3027 0100	1.0"	25.4	38.1	1.6
3027 0150	1.5"	38.1	57.2	1.6
3027 0200	2.0"	50.8	76.2	1.6
3027 0250	2.5"	63.5	95.3	1.6
3027 0300	3.0"	76.2	114.3	1.6
3027 0400	4.0"	101.6	152.4	2.0

\*\*T304 and T316L are available.

AL2S Bend 90°



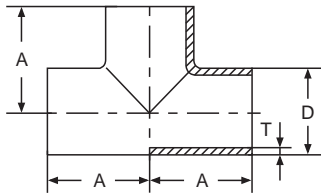
Basic Ordering Number: 3028

NO.	Size	D	A	T
3028 0100	0.5"	12.7	45	1.6
3028 0150	0.75"	38.1	60	1.6
3028 0100	1.0"	25.4	65	1.6
3028 0150	1.5"	38.1	85	1.6
3028 0200	2.0"	50.8	110	1.6
3028 0250	2.5"	63.5	135	1.6
3028 0300	3.0"	76.2	155	1.6
3028 0400	4.0"	101.6	195	2.0

\*\*T304 and T316L are available.

# BS Fittings

AL7WWW Equal Tee, No Tangent

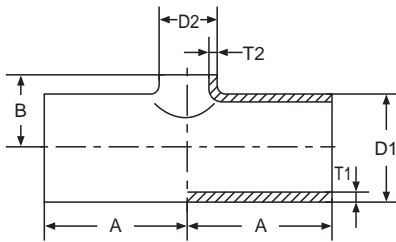


Basic Ordering Number: 3029

NO.	Size	D	H	A	T
3029 0100	1.0"	25.4	13.8	43.5	1.6
3029 0150	1.5"	38.1	19.9	63.5	1.6
3029 0200	2.0"	50.8	27.6	88.5	1.6
3029 0250	2.5"	63.5	34.9	113.5	1.6
3029 0300	3.0"	76.2	40.9	133.5	1.6
3029 0400	4.0"	101.6	54.7	173.5	2.0

\*\*T304 and T316L are available.

AL7RW Reducing Tee

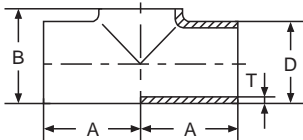


Basic Ordering Number: 3031

NO.	Size	D1	D2	B	A	T
3031 01510	1.5"×1.0"	38.1	25.4	22	63.5	1.6
3031 02010	2.0"×1.0"	50.8	25.4	29	88.5	1.6
3031 02015	2.0"×1.5"	50.8	38.1	29	88.5	1.6
3031 02515	2.5"×1.5"	63.5	38.1	35	113.5	1.6
3031 02520	2.5"×2.0"	63.5	50.8	35	113.5	1.6
3031 03015	3.0"×1.5"	76.2	38.1	41	133.5	1.6
3031 03020	3.0"×2.0"	76.2	50.8	41	133.5	1.6
3031 03025	3.0"×2.5"	76.2	63.5	41	133.5	1.6
3031 04020	4.0"×2.0"	101.6	50.8	55	173.5	2.0
3031 04025	4.0"×2.5"	101.6	63.5	55	173.5	2.0
3031 04030	4.0"×3.0"	101.6	76.2	55	173.5	2.0

\*\*T304 and T316L are available.

A7W Equal Tee



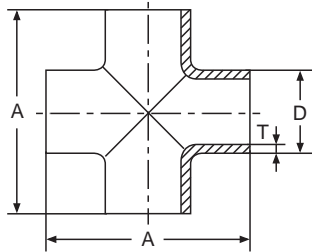
Basic Ordering Number: 3030

NO.	Size	D	B	A	T
3030 0100	1.0"	25.4	14.3	44	1.6
3030 0150	1.5"	38.1	22.2	64	1.6
3030 0200	2.0"	50.8	28.6	89	1.6
3030 0250	2.5"	63.5	34.9	114	1.6
3030 0300	3.0"	76.2	41.3	134	1.6
3030 0400	4.0"	101.6	54	174	2.0

\*\*T304 and T316L are available.

# BS Fittings

## A9WWWW Equal Cross

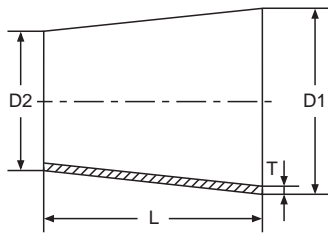


### Basic Ordering Number: 3032

NO.	Size	D	A	T
3032 0100	1.0"	25.4	44	1.6
3032 0150	1.5"	38.1	64	1.6
3032 0200	2.0"	50.8	89	1.6
3032 0250	2.5"	63.5	114	1.6
3032 0300	3.0"	76.2	134	1.6
3032 0400	4.0"	101.6	174	2.0

\*\*T304 and T316L are available.

## L31 Concentric Reducer

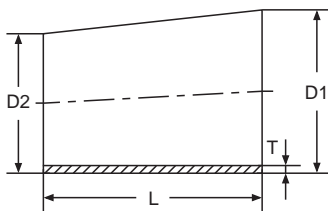


### Basic Ordering Number: 3033

NO.	Size	D1	D2	L	T
3033 01510	1.5"×1.0"	38.1	25.4	29	1.6
3033 02010	2.0"×1.0"	50.8	25.4	53	1.6
3033 02015	2.0"×1.5"	50.8	38.1	41	1.6
3033 02510	2.5"×1.0"	63.5	25.4	82	1.6
3033 02515	2.5"×1.5"	63.5	38.1	64	1.6
3033 02520	2.5"×2.0"	63.5	50.8	40	1.6
3033 03010	3.0"×1.0"	76.2	25.4	110	1.6
3033 03015	3.0"×1.5"	76.2	38.1	81	1.6
3033 03020	3.0"×2.0"	76.2	50.8	55	1.6
3033 03025	3.0"×2.5"	76.2	63.5	41	1.6
3033 04015	4.0"×1.5"	101.6	38.1	135	2.0
3033 04020	4.0"×2.0"	101.6	50.8	106	2.0
3033 04025	4.0"×2.5"	101.6	63.5	76	2.0
3033 04030	4.0"×3.0"	101.6	76.2	53	2.0

\*\*T304 and T316L are available.

## L32 Eccentric Reducer



### Basic Ordering Number: 3034

NO.	Size	D1	D2	L	T
3034 01510	1.5"×1.0"	38.1	25.4	35	1.6
3034 02010	2.0"×1.0"	50.8	25.4	54	1.6
3034 02015	2.0"×1.5"	50.8	38.1	36	1.6
3034 02510	2.5"×1.0"	63.5	25.4	76	1.6
3034 02515	2.5"×1.5"	63.5	38.1	66	1.6
3034 02520	2.5"×2.0"	63.5	50.8	35	1.6
3034 03010	3.0"×1.0"	76.2	25.4	112	1.6
3034 03015	3.0"×1.5"	76.2	38.1	78	1.6
3034 03020	3.0"×2.0"	76.2	50.8	66	1.6
3034 03025	3.0"×2.5"	76.2	63.5	44	1.6
3034 04015	4.0"×1.5"	101.6	38.1	122	2.0
3034 04020	4.0"×2.0"	101.6	50.8	97	2.0
3034 04025	4.0"×2.5"	101.6	63.5	73	2.0
3034 04030	4.0"×3.0"	101.6	76.2	77	2.0

\*\*T304 and T316L are available.



## P&E TECHNOLOGY

Provide customers with most  
precise and efficient solution  
and make the world work better.

[www.pestainless.com](http://www.pestainless.com)